

# GOOD HEALTH GOOD HEART

**Ann McLean SCN (Project Lead)**

**Jonathon Bate Clinical Pharmacist**

**Amanda Murdoch RMN**

**Trixy Heather RMN**

**Sharon Adamson CPN**

**Ged Coughlin CPN**



People who suffer from mental health problems, especially those with severe and enduring mental illness are far more likely to suffer from major physical illness, compared with the general population.

Patients found it difficult accessing ECG monitoring and physical health checks as per guidelines.



# AIM OF PROJECT

- ❖ Devise care pathway for patients prescribed long term antipsychotic or Clozapine medications
- ❖ To ensure patients are able to access a physical health check and ECG as per guidelines
- ❖ To provide continuity of care in the community



# PROCESS

- ❖ Weekly meetings
- ❖ Identified 46 patients for project
- ❖ Liaised with Forth Valley NHS
- ❖ Liaised with other relevant health professionals
- ❖ Atrial Fibrillation training
- ❖ Devised patient questionnaire

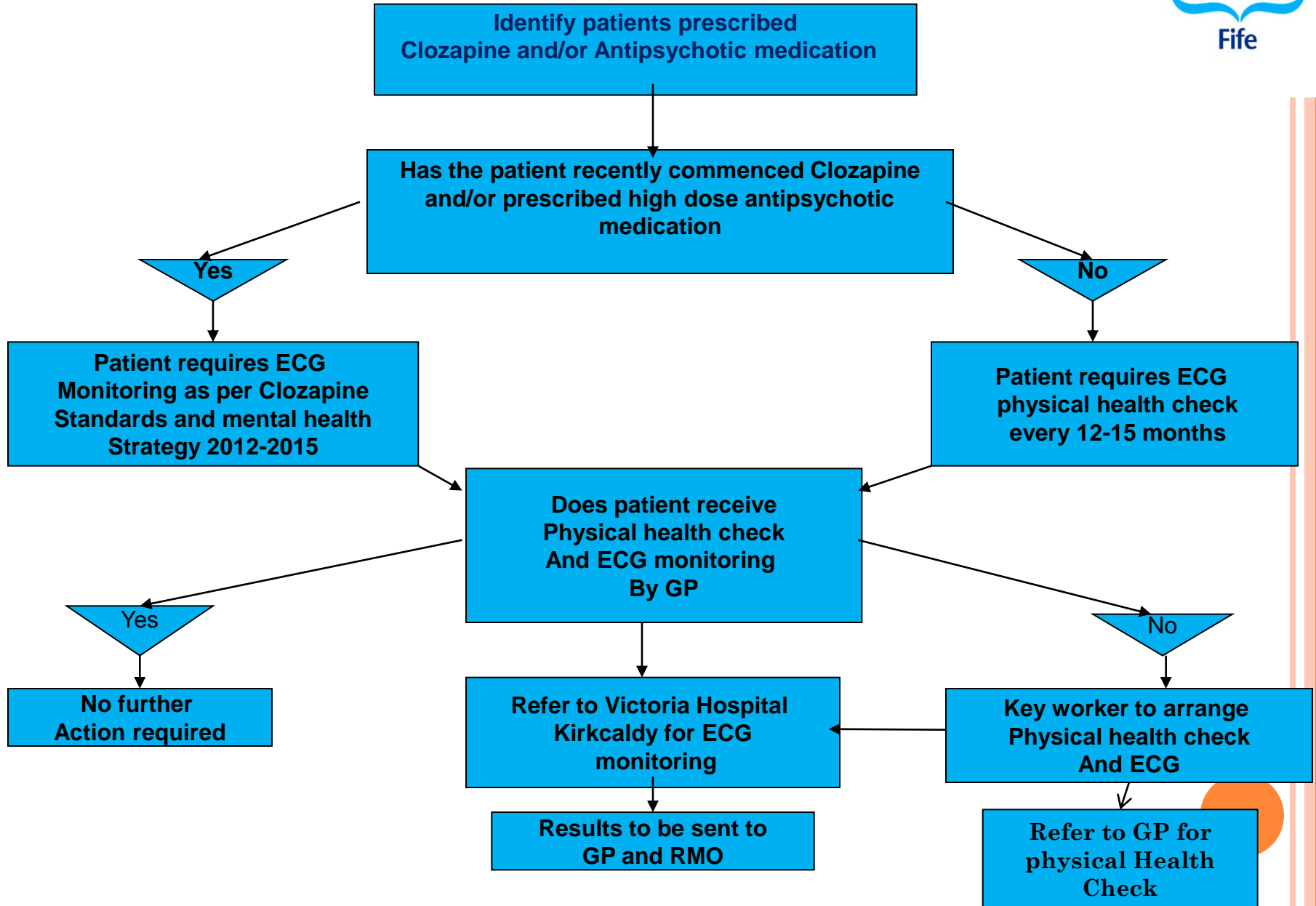


# EFFECTIVE PRACTITIONER PILLARS

- ❖ Evidence based practice
- ❖ Self assessment tool
- ❖ Leadership pillar



# ECG Monitoring and Physical Health Check Care Pathway



# CONCLUSION

- ❖ Earlier identification and intervention of physical health issues
- ❖ Regular ECG monitoring of patients prescribed antipsychotic medication and/or clozapine
- ❖ Improve knowledge and skills Mental Health Community staff regarding of physical health issues and interventions
- ❖ Plans to work in collaboration with other projects
- ❖ Creation of physical health care pathway
- ❖ Plan to apply for funding for ECG training and equipment



# GUIDELINES

- ❖ Mental Health Strategy 2012-2015
- ❖ Clozapine Standards
- ❖ Sign Guidelines 131 – Management of Schizophrenia
- ❖ Delivering Mental Health – Commitment 5
- ❖ NHS Fife Policy Guidance on Drug Treatment of Schizophrenia in Patients 18 years and over





# ACKNOWLEDGEMENTS

- ❖ Marianne Fairley-Murdoch. NES PEF for Nursing and Midwifery NHS Fife
- ❖ Karen Storey HMCN NHS Forth Valley
- ❖ Gillian Hutchison and Elizabeth Adamson PEF NHS Fife
- ❖ Arlene Cobban AF Study Research Nurse NHS Fife
- ❖ Lynne Garvie Heart Disease MCN Coordinator NHS Fife
- ❖ Carol Speed Nurse Manager ECG Dept VHK NHS Fife
- ❖ Mike Kelly Clinical Governance NHS Fife

